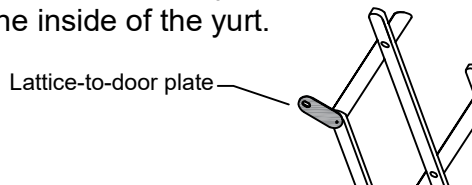




Retrofitting an Additional Door (Classic Tall)

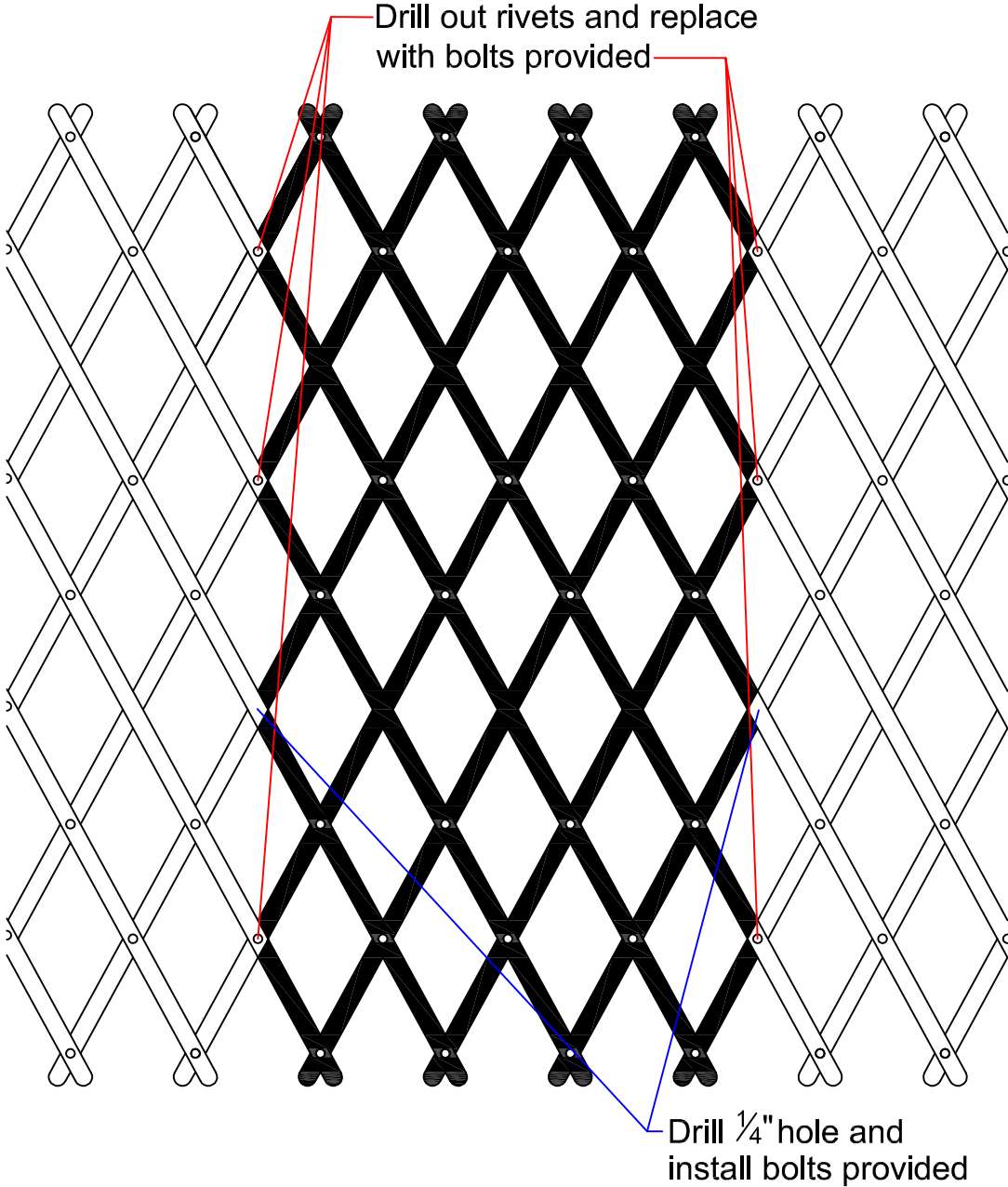
You should always locate the additional door at exactly 12:00, 3:00 or 9:00 when your original door is at 6:00 on a clock face. This will make it much easier when ordering replacement covers or parts for the yurt in the future. If you choose to install the door at a non-standard location, it will make it more difficult to match the location.

1. The top portion of lattice wall where the steel tension cable rests are called "crotches". You will need to remove four crotches to retrofit an additional door. First, mark where you will need to cut the lattice wall (refer to "cutting lattice wall" diagram).
2. Mark the center of this area on your side cover and, using sharp scissors, cut the side cover (and side insulation) vertically from top to bottom.
3. Using a sharp saw, cut the lattice wall where indicated on the Cutting Lattice Wall diagram to remove the four crotches of lattice (the shaded portion on the diagram). Notice that "elbows" are created when you remove this portion of the lattice wall.
4. Using a ¼" bit, you will need to drill out some rivets on the elbows as well as drill a couple of new holes (see diagram). This is where you will be installing the ¼" x 1-¼" bolts and metal plates that are provided.
5. Install the ¼" bolt through the round hole on the metal lattice wall plate so that the plate bends away from the head of the bolt. Then slide the bolt through the ¼" hole in the lattice elbow from the outside and secure into position with the washer and acorn nut. (Be sure to tighten the nut.) A "premier" yurt will have eight bolts to be installed. Once installed, the lattice wall plates should be on the inside of the lattice wall and bend toward the inside of the yurt.



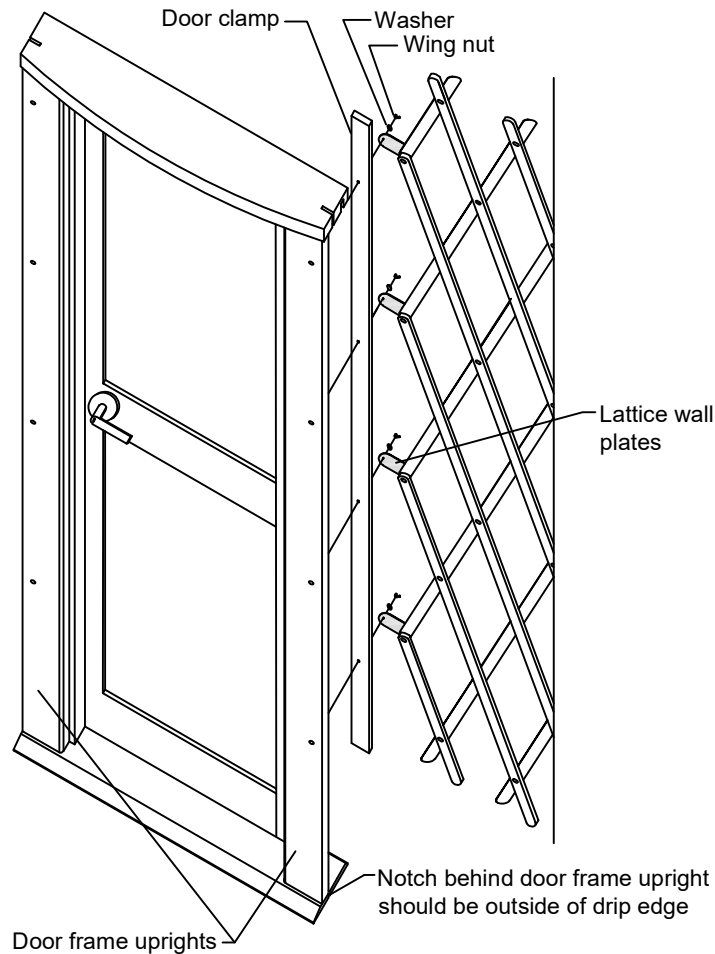
6. The 1" portion of your platform's plywood drip edge that extends above the interior floor level will need to be cut down to floor level (just wide enough for your new door). Note: Be sure to measure your new door frame to confirm the proper width to cut from the drip edge.
7. Stand the new door in the opening you created making sure that the keyed side of the door handle faces outward. If the opening in the lattice wall is not wide enough for the new door you may need to slide the lattice wall over a little on each side to widen the opening. Remove the door clamp fascia (boards that hide the wing nuts) and set them aside for later. They simply slide out of the grooves in the header.
8. Remove the wing nuts and washers (but not the wooden door clamps) from the inside of the door frame. Do not discard the two pieces of lath that were clamped there, these are your "door stickers" and will be used to secure the side cover into the door frame. Slip the end of the lattice wall plates (with the oval hole) onto the door frame bolts then replace the washers and wing nuts (loosely).

Cutting Lattice Wall



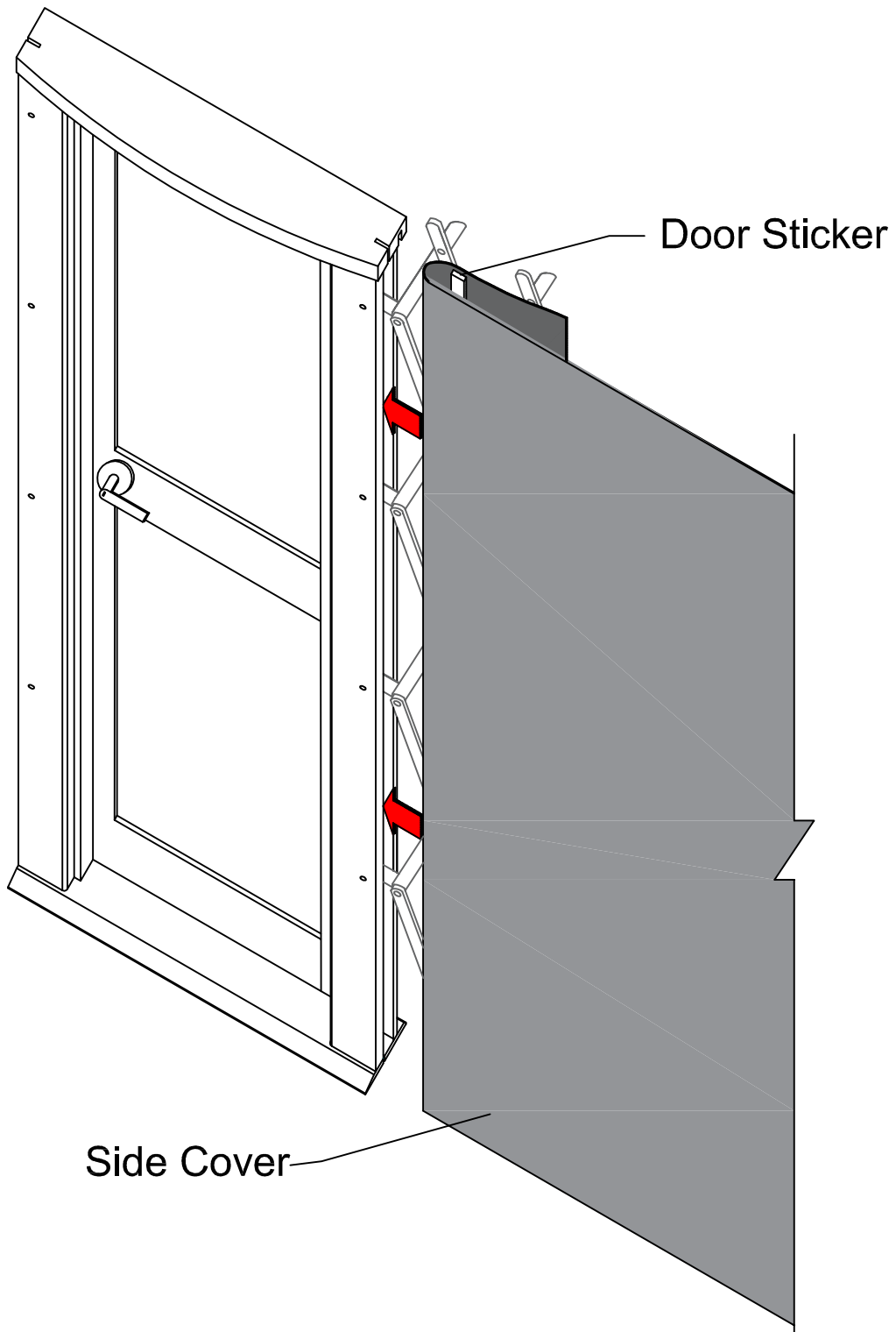
Remove lattice that is shaded

9. Remove the wing nuts and washers (but not the wooden door clamps) from the inside of the door frame. Do not discard the two pieces of lath that were clamped there, these are your "door stickers" and will be used to secure the side cover into the door frame. Slip the end of the lattice wall plates (with the oval hole) onto the door frame bolts then replace the washers and wing nuts (loosely).
10. Notice that there is a notch in the door threshold directly behind the door frame upright. position the door threshold so that this notch is outside the drip edge (see diagram). Anchor the threshold to the platform using the screws provided. The notch allows the side cover to extend below the threshold.



11. Screws have been provided for attaching the door header to the rafters above. Check to be sure the door is plumb and square and then drive one screw per rafter up through the door header into the rafters above it. The screws will help to hold the door frame in position.
12. Make sure the wing nuts are as loose as they can be without removing them, then fold the side cover fabric around the door sticker (so that the excess is between the side cover and the lattice wall) and insert it into the door frame until the door sticker butts against the bolts (see "attaching the side cover" diagram). Note: do not make the mistake of wrapping the side cover around the door sticker many times and trying to fit this roll of fabric into the door frame. Simply fold the fabric once around the door sticker, adjust the positioning for a tight fit, and insert it between the wood door clamp and the door frame upright. Now tighten the wing nuts securely.
13. Notice that three small pilot holes have been drilled into each of the door clamps. Install the provided 2" screws through the holes to secure the door sticker in place.

Attaching Side Cover



14. The top cover valance (portion of the roof that overhangs the wall) will need to be modified for your new door. Place the new valance section (containing the door detail) over the existing top cover valance so it is centered at your new door location. Mark the outer edges of the new valance section onto the existing valance using a dry erase marker and then remove the new valance section.
15. Measure 2" from these marks, as well as 1" down from the top edge of the valance and draw lines to connect your marks as indicated on Diagram A (on next page). This area will be removed from your valance leaving enough fabric to adhere the new door detail onto.
16. Using sharp scissors, cut and remove the area indicated on Diagram B (on next page).
17. Make sure the fabric is clean and dry, then apply HH-66 adhesive to the outer edges along the top and sides of the new valance detail (on the backside), and to the existing valance in the area indicated on Diagram C (on next page).
18. Let the adhesive dry for 2-5 minutes, then press the new valance detail onto the existing valance. The adhesive works best at 60 degrees (Fahrenheit) or warmer. For more information see instructions on the can of HH-66 adhesive.
19. Allow the adhesive at least 30 minutes to dry and then use the grommets on the new valance detail as guides for pre-drilling holes for installing the door twist locks, which fasten the top cover to the door frame. Use a 3/32" bit for drilling pilot holes.

Modifying Top Cover Valance

Diagram A

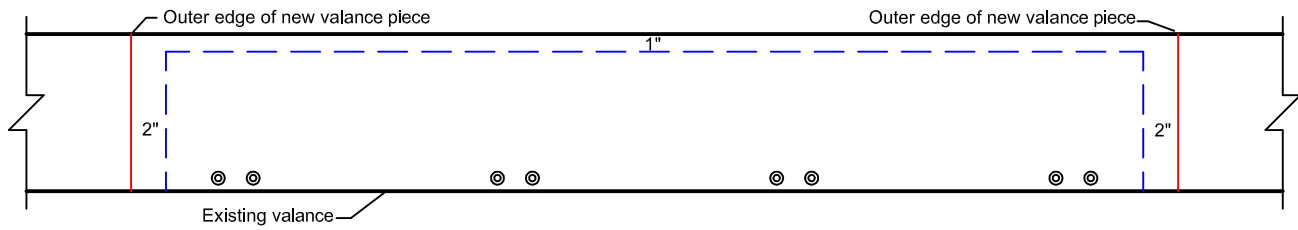


Diagram B

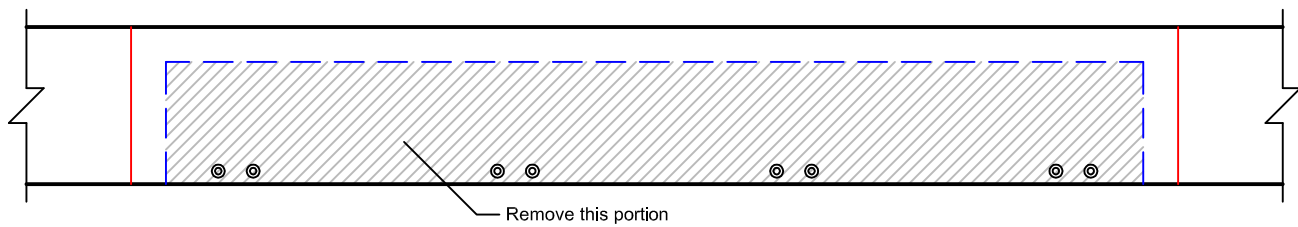


Diagram C

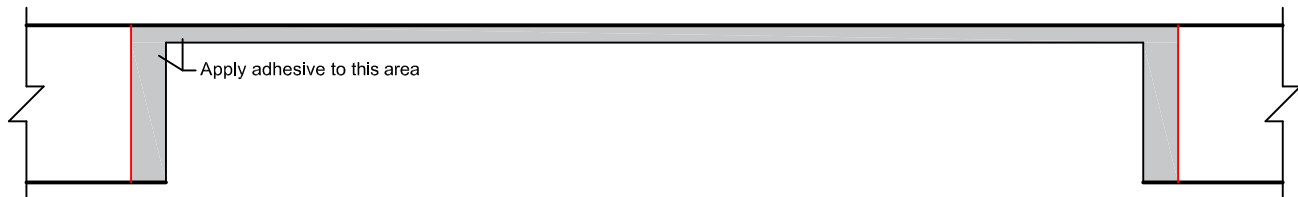


Diagram D

